



## OFFHAM PARISH COUNCIL

### Parish Council Newsletter – June 2024

#### June Parish Council Meeting

- Borough Councillor Tatton attended the meeting
- Infinis have agreed to pay for a new Notice Board by the Recreation Ground and were thanked. Cllr Taylor has met with TMBC who own the car park by the Recreation Ground. It has been agreed that the Board will be moved slightly so it faces Teston Road.
- The Recreation Ground is proving incredibly popular. Unfortunately, this has led to an increase in rubbish. Visitors are encouraged:
  - Take rubbish home with you wherever possible
  - Only leave rubbish in the bins provided
  - If the bins are full, report TMBC to empty – 01732 844522, [waste.servies@tmbc.gov.uk](mailto:waste.servies@tmbc.gov.uk)

#### Play Area Refurbishment – Phase Two

Work to improve the play area will begin on Monday 17<sup>th</sup> June and should take up to 2 weeks. Some car parking spaces will not be available as they will be used by the Contractor – details are later in the newsletter. The Parish Council is grateful for your support and apologises for the inconvenience.

#### Public Rights of Way – footpaths and bridleways - Church Farm

Marion Regan from Church Farm, LJ Betts provided the Parish Council with the following update: "We take our responsibilities towards keeping Public Rights of Way's clear and available and are very happy to welcome legitimate users. There is also a bridleway on the farm to the North which is well marked. However we are increasingly concerned at the dangers posed to our people and other walkers through motor bikes and quad bikes (ATVs) using tracks on the farm and often going through our crops.

We also are seeing many people using – or even making - tracks which are not public rights of way, and people letting their dogs off the lead amongst high value food crops. This is also damaging where we have areas devoted to natural vegetation and wildlife, such as in the woodland and meadow areas. For many people this is because, although the footpaths are clearly way marked by council signs, it probably is still unclear where the actual footpaths are. Therefore we plan to put a few more discreet signs up to alert people to the route of the footpaths. We will also reiterate the need to keep dogs under control on a lead. Finally, we will unfortunately have to keep more gates closed and locked to stop illegal motorised vehicles going around the farm at high speeds endangering all of us"

#### Spadework – 40th Anniversary



celebrating 40 years | 1984 - 2024

The Parish Council congratulates Spadework on its 40<sup>th</sup> anniversary.

## **6<sup>th</sup> June 2024 – D -Day Commemoration**

Thanks to Robin T for the display on the Village Green to commemorate the 80<sup>th</sup> Anniversary of D-Day and honour the service and sacrifice of the D-Day Generation.



## **Buses 58 And 70 - Route And Time Changes On & From 14 June 2024**

Nu-Venture buses 58 (Fridays) and 70 (Mondays) continue to serve the Wrotham, Borough Green, Platt, Wrotham Heath, Addington, Trottscliffe, Ryarsh, Birling, Offham areas, also West and East Malling. Nu-Venture warmly acknowledges the support for these services from local Parish and Town Councils and from continuing Community Transport funding provided by Kent County Council.

Routes and times alter slightly from 14 June (Bus 58) and 15 June (Bus 70), reflecting a necessary route change in West Malling because of problems caused there by parking, especially in Swan Street.

### **Bus 70 – Wrotham <> Borough Green <> Offham <> West/East Malling <> Maidstone**

Bus 70 on Mondays will now extend to/from Maidstone providing an additional facility, and will also serve Hildenborough Crescent (1031)/Castle Road in the Allington area. There's also a route change in West Malling because of problems caused there by parking, especially in Swan Street.

Outward times from Wrotham/Borough Green are slightly revised. Wrotham 0936, Borough Green Station 0941, Platt 0947, Wrotham Heath 0950, Offham Green 0955, West Malling High Street 1000, Leybourne Chase 1006, East Malling 1018 to Larkfield and Maidstone (returning from Maidstone Chequers Bus Station (Stop H1) at 1300).

The Shoppers Bus 70 to/from Tesco *Lunsford Park* will now operate on Thursdays at these times: Wrotham 1125, Borough Green Station 1130, Platt 1136, Wrotham Heath 1139, Offham Green 1144, West Malling High Street 1149, Leybourne Chase 1155, returning from Tesco at 1405.



## **Parish Council and Village Events**

- St Michaels Church – Offham Village Service – Sunday 23<sup>rd</sup> June 2024
- Offham Society Lazy Sunday Jazz 30<sup>th</sup> June 2024
- Offham Garden Safari – 14<sup>th</sup> July 2024
- Shedettes – the Kings Arms, every Tuesday 10am – 11.30am

- Men's Shed – The Kings Arms, every Thursday 10am-11.30am
- Offham Food Bank – every other Monday from Kings Arms ([offhamvillagehall@outlook.com](mailto:offhamvillagehall@outlook.com))

**Contact the Parish Council** E: [clerk@offham-pc.gov.uk](mailto:clerk@offham-pc.gov.uk) T: 07563 606573. The Parish Council Clerk works 12 hours a week, Monday to Thursday, and aims to respond to emails and phone calls within 5 working days. For more information, please go to our website [www.offham-pc.gov.uk](http://www.offham-pc.gov.uk) or [@Offham Parish Council](https://www.facebook.com/OffhamParishCouncil) on Facebook for further updates.

### **Offham Parish Council Meetings**

The next monthly meeting will be held on **Tuesday 2<sup>nd</sup> July 2024** at 7.30pm in the Village Hall Committee Room.

**Village Service 2024**  
**6.00pm**  
**Sunday 23rd June at**  
**St. Michael's Church**

Celebrating



in Offham

**Everyone is invited - we hope  
to see you there!**

Please join us afterwards for drinks in the churchyard

West Malling & Offham NSPCC Supporters Group  
invites you to an

**Offham Garden  
Safari**

on  
**Sunday 14 July 2024**  
**11.00pm through to 4.30pm**

Come and enjoy the beautiful gardens in our  
picturesque village.

Tickets with map available from the Tea Tent on the  
Green or from any of the participating gardens.



**Entrance to all gardens - £8.00 per adult**  
**Children under 14yrs - Free**

★ Tea & cakes available on the Village Green ★  
★ Plant Stall ★

For further information email: [wmevents@sky.com](mailto:wmevents@sky.com)

**EVERY CHILDHOOD IS WORTH FIGHTING FOR**

Registered Charity No: 21401 and 401211

*Nu-Venture buses 58 and 70 serve all fixed bus stops on line of route, and on request at any safe point in rural areas and villages. As the bus approaches, please give a clear hand-signal to the driver*

### Bus 70 - WROTHAM/BOROUGH GREEN <-> OFFHAM <->TESCO/MAIDSTONE

Fridays only (not Good Friday, nor Bank, National or Public Holidays, nor 27 to 31 December)

	Code	F		Code	F
<i>Nu-Venture service number</i>		<b>58</b>	<i>Nu-Venture service number</i>		<b>58</b>
Wrotham Square		0930	MAIDSTONE CHEQUERS BUS STN - STOP H1		1300
Borough Green Station		0935	Maidstoen King St <i>Boots</i>		1301
Platt A25 Long Mill Lane		0938	Maidstone High St <i>Town Hall</i>		1302
Wrotham Heath <i>opp Royal Oak</i>		0941	Maidstone West Station		1304
Addington <i>opp The Green</i>		0946	A20 'Somerfield Hospital'		1307
Trottscliffe <i>opp The George</i>		0950	Aylesford (A20) <i>Sainsbury's</i>		1314
Wrotham Heath <i>The Vineyard</i>		0954	A20 <i>Ditton Corner</i>		1317
Addington <i>opp Jungle Café</i>		0957	Larkfield <i>Wealden Hall</i>		1318
Ryarsh <i>opp Duke of Wellington</i>		1002	East Malling <i>opp King and Queen</i>		1322
Birling <i>opp Nevill Bull</i>		1005	West Malling High St <i>Tesco</i>		1332
Leybourne <i>Baywell</i>		1010	Leybourne <i>The Old Rectory</i>		1338
West Malling High St <i>opp Tesco</i>		1017	Birling <i>Nevill Bull</i>		1346
East Malling <i>King &amp; Queen</i>		1027	Ryarsh <i>Duke of Wellington</i>		1348
Larkfield <i>opp Wealden Hall</i>		1031	Addington <i>Jungle Café</i>		1352
A20 <i>Hall Road opp Sainsbury's</i>		1035	Addington <i>opp The Green</i>		1354
A20 <i>opp 'Somerfield Hospital'</i>		1043	Trottscliffe <i>opp The George</i>		1358
MAIDSTONE TOWN CENTRE <i>King St</i>		1050	Wrotham Heath <i>Royal Oak</i>		1401
			Platt A25 Long Mill Lane		<i>then set</i>
			Borough Green Station		<i>down</i>
			Wrotham Square		<i>only</i>
	<i>Code F = Fridays only</i>				

### Bus 70 - WROTHAM/BOROUGH GREEN <-> OFFHAM <->TESCO/MAIDSTONE

Mondays and Thursdays only (not Bank, National or Public Holidays, nor 27 to 31 December)

	Code	M	TH		Code	M	TH
<i>Nu-Venture service number</i>		<b>70</b>	<b>70</b>	<i>Nu-Venture service number</i>		<b>70</b>	<b>70</b>
Wrotham Square		0936	1125	MAIDSTONE CHEQUERS BUS STN - STOP H1		1300	-
Borough Green Station		0941	1130	Maidstoen King St <i>Boots</i>		1301	-
Platt A25 Long Mill Lane		0947	1136	Maidstone High St <i>Town Hall</i>		1302	-
Wrotham Heath <i>opp Royal Oak</i>		0950	1139	Maidstone West Station		1304	-
Offham Green		0955	1144	A20 'Somerfield Hospital'		1307	-
West Malling High St <i>opp Tesco</i>		1000	1149	Hildenborough Crescent		1313	-
Leybourne Chase <i>opp Costcutter</i>		1006	1155	Aylesford (A20) <i>Sainsbury's</i>		1318	-
Lunsford Park <i>Tesco</i> Chaucer Way		-	1205	A20 <i>Ditton Corner</i>		1321	-
East Malling <i>King and Queen</i>		1018	-	Larkfield <i>Wealden Hall</i>		1322	-
Larkfield <i>opp Wealden Hall</i>		1022	-	East Malling <i>opp King and Queen</i>		1326	-
A20 <i>Hall Road opp Sainsbury's</i>		1026	-	Lunsford Park <i>Tesco</i> Chaucer Way		-	1410
Hildenborough Crescent		1031	-	Leybourne Chase <i>Costcutter</i>		1338	1418
A20 <i>opp 'Somerfield Hospital'</i>		1037	-	West Malling High St <i>Tesco</i>		1344	1424
MAIDSTONE TOWN CENTRE <i>King St</i>		1044	-	Offham Green		1349	1429
				Wrotham Heath <i>Royal Oak</i>		1354	1434
				Platt A25 Long Mill Lane		1357	1437
				Borough Green Station		1402	1442
				Wrotham Square		1407	1447
	<i>Code M = Mondays only</i>						
	<i>Code TH = Thursdays only</i>						

NO SERVICE ON SATURDAYS,SUNDAYS, BANK, NATIONAL OR PUBLIC HOLIDAYS including 1 January, 25/26 December.

*A Saturday service operates on working days between Christmas and New Year. NO service Christmas Day/Boxing Day/ New Year's Day.*

*Nu-Venture operate buses 58 and 70 with Community Transport funding from Kent County Council, in conjunction with financial support from local Parish Councils.*

*This is gratefully acknowledged*



# Offham Parish Council



Marking 50 years of  
Tonbridge and Malling



## Offham Recreation Ground Grand Opening 13<sup>th</sup> May 2024

Offham Parish Council held an official opening of new sports equipment in the Recreation Ground on Teston Road in Offham on Monday 13<sup>th</sup> May. Chair, Cllr Sue Taylor welcomed everyone. Borough Councillors Trudy Dean, Michelle Tatton and Roger Roud represented TMBC, who had funded the equipment through s106 monies. The Planning Obligation Team at TMBC were thanked for their support. The monies originated from the Developer Pro Logis, who have built in Kings Hill and they were thanked for their contribution which will make such a difference to the adults and children of our village.

Charles Unter the retired Chair of Offham Parish Council, started the project with Cllr Taylor. Equipment includes an agility net, agility trail, concrete table tennis table and chess boards and a 173 metre walking track with designs. Table Tennis bats, balls and chess pieces can be borrowed from the Kings Arms for a small deposit, or you can bring your own.

Parish Councillors and local residents were at the event, but the guests of honour were from the School Council at Offham Primary School. Students had taken part in the Parish Council's survey to find out what equipment they would like to see in the park. After a ribbon cutting at the Agility Net the pupils were able to try all the equipment.



Agility Net



Concrete Chess Boards



Concrete Table Tennis Table



The Kit Box contains table tennis bats and chess pieces and is available to borrow from the Kings Arms



Agility Trail

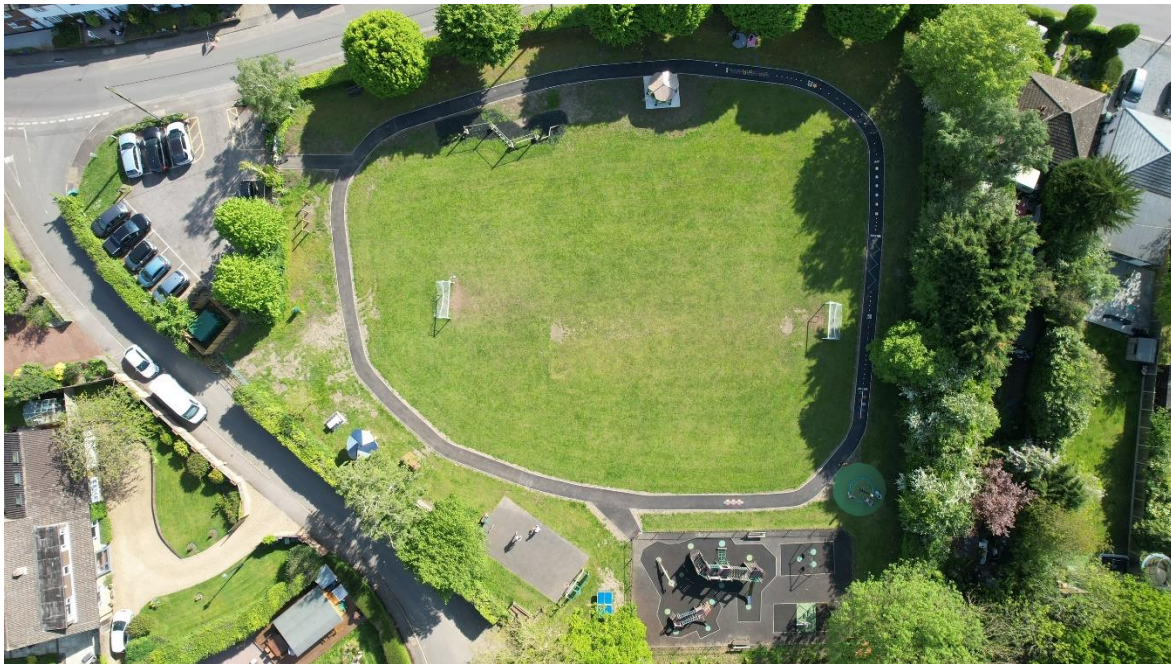




Borough Councillors Trudy Dean, Roger Roud and Michelle Tatton



Councillors Sue Taylor and Sue Williams



Aerial view of the ground provided by First4Civils



# Guided group walks – July

# 2024



Our friendly group is one of 13 Ramblers groups in Kent and part of the national Ramblers walking organisation. We explore the beautiful countryside of Tonbridge and Malling and surrounding areas.

You don't have to be a Ramblers member to try up to three 'taster' walks with us. If you're new to our walks, please contact the walk leader to check that their walk will suit you.

*Tonbridge Castle – 21 July walk*

**For details of all upcoming walks and walk leaders, see [Tonbridge and Malling Ramblers Facebook page](#) or visit [www.tonbridgeandmallinghamblers.org.uk](http://www.tonbridgeandmallinghamblers.org.uk).**

Thursday 4 July	Circular walk through the Medway and Eden river valleys and Penshurst with its fine manor house. Moderate difficulty with one stile; could be muddy depending on the weather.	5 miles
Sunday 7 July	Scenic walk from Shoreham through the woodland and chalk grassland of the peaceful Austin Lodge Valley. Moderate difficulty with two steep climbs and one long steady incline. Approximately five stiles.	5 miles
Thursday 11 July	Knockholt Chevening Circular: explore the meadows and woods of the North Downs escarpment with grand views of Chevening House. Moderate difficulty with one steep climb.	5 miles
Wednesday 17 July	Linear walk from Wrotham following Stage 10 of the Pilgrims Way to Halling. Lovely views towards Trottiscliffe and Ryarsh. Moderate difficulty. Return by train to Borough Green before walking back to Wrotham (approximately one mile).	8 miles
Sunday 21 July	Leisurely, fairly flat walk from Tonbridge Castle to Leigh and back, following the Wealdway to Haysden, and the Eden Valley Walk to Leigh. Rivers, lakes and typical Kent countryside make this a lovely walk.	7 miles
Wednesday 24 July	Circular walk from Meopham Green towards New Ash Green before heading down to Ridley and Culverstone Green. Moderate difficulty.	7.5 miles

Walks usually start mid-morning. There's a short half-way break (bring refreshments) and we usually finish near a pub. Most walks are dog-friendly (see website).



4<sup>th</sup> June 2024

Dear resident

Thank you for your co-operation when the car park was closed on a few occasions recently, when equipment was installed in Phase One of works to the Recreation Ground, which was funded by TMBC.

We are very fortunate that the Parish Council has also secured funding to replace the equipment in the enclosed Play Area, from FCC Communities Foundation, which will be Phase Two.

Work begins 17<sup>th</sup> June 2024 and should take two weeks. This is the last phase of works to the Recreation Ground and Play Area and there should be no more closures if work goes according to plan.

Some spaces in the car park will be unavailable again over that two week period – we expect it will be the same spaces which were out of use during Phase One of works in the Recreation Ground. The same contractor is being used as the Parish Council was very pleased with the way they operated during Phase One.

As soon as we receive updates from the contractor we will let you know. The contractor knows that as many spaces should be left open as possible.

If you would like to receive updates regarding the car park and/or general Parish Council updates, please provide the Clerk with your email address – [clerk@offham-pc.gov.uk](mailto:clerk@offham-pc.gov.uk).

We will also put details of the closures onto our Parish Council website [www.offham-pc.gov.uk](http://www.offham-pc.gov.uk) and onto our Facebook page.

Tonbridge & Malling Borough Council own the car park and we have notified them about these spaces being potentially unavailable for this time.

Once again, the Parish Council apologises for the inconvenience this will cause, and is very grateful for your support which will enable the Enclosed Play Area works to be carried out.

**Notice of appointment of date for the exercise of public rights**  
**Accounts for the year ended 31<sup>st</sup> March 2024**

The Local Audit and Accountability Act 2014, and  
The Accounts and Audit (England) Regulations 2015 (SI 234)

<p>1. Date of announcement: 5<sup>th</sup> June 2024 (a)</p> <p>2. Any person interested has the right to inspect and make copies of the accounts to be audited and all books, deeds, contracts, bills, vouchers and receipts relating to them. For the year ended 31 March 2024 these documents will be available on reasonable notice on application to:</p> <p>b) Lynne Mackie, Offham Parish Council Clerk <a href="mailto:clerk@offham-pc.gov.uk">clerk@offham-pc.gov.uk</a>, 07563 608573</p> <p>commencing on (c) 08th June 2024</p> <p>and ending on (d) 17<sup>th</sup> July 2024</p> <p>3. Local Government Electors and their representatives also have:</p> <ul style="list-style-type: none"><li>• the opportunity to question the auditor about the accounts; and</li><li>• the right to make objections to the accounts or any item in them. Written notice of an objection must first be given to the auditor and a copy sent to the Authority (f).</li></ul> <p>The auditor can be contacted at the address in paragraph 4 below for this purpose during the inspection period at 2 above.</p> <p>4. The auditor's limited assurance review is being conducted under the provisions of the Local Audit and Accountability Act 2014, the Accounts and Audit (England) Regulations 2015 and the National Audit Office' Code of Audit Practice. Your review is being carried out by: Mazars LLP, The Corner, Bank Chambers, 28 Mosley Street, Newcastle upon Tyne, NE1 1DF Email: <a href="mailto:local.councils@mazars.co.uk">local.councils@mazars.co.uk</a></p> <p>5. This announcement is made by (e) Lynne Mackie, Clerk and RFO</p>	<p>(a) Insert date of placing of this notice on your website.</p> <p>(b) Insert name, position and contact details of the Clerk or other person to whom any person may apply to inspect the accounts.</p> <p>(c) And</p> <p>(d) The inspection period must be 30 working days in total and commence no later than 1 July 2024.</p> <p>(e) Insert name and position of person placing the notice</p>
---	---



**Election of Member of Parliament to  
Tonbridge Constituency  
Notice of Poll and Persons Nominated**

**Tonbridge and Malling Borough Council  
Notice is hereby given that:**

**A poll will be held on Thursday, 4 July 2024 between 7:00am and 10:00pm The number of  
Members of Parliament to be elected is 1**

**The following people stand nominated for election to this Constituency**

Candidate name	Description of candidate	Address of candidate <sup>1</sup>	Names of subscribers to the nomination (Proposer and Seconder listed first)
BAILEY, Lewis William John	Labour Party	(address in Gillingham and Rainham Constituency)	Jane SE Pover (P), Callum Ryan Lake (S), Anne Mary Nida, Daphne Cunningham, John Edward Emrys Tyrrell, Kathryn Elaine Parish, Kerry Dawn Jordan-Daus, Patricia Townend, Richard Williams, Robin Jasper Potter
COPE, Anna Victoria	The Green Party	22 Ashburnham Rd, Tonbridge, Kent, TN10 3DU	Nicholas J Voulis (P), Helen C Blakebrough (S), Carol Ranson, Daniel J Gardner, David E Allen, Ingrid N Button, Joan G Allen, Philip M Ranson, Rowan Harry Baker, Sara J Starkey
GRATTIDGE, Ian	Social Democratic Party	(address in Sevenoaks Constituency)	Cassandra Joan Moxon (P), Esther Wheller (S), Andrew Magness, Antonio Capozzi, Clare Capozzi, Elizabeth Sherratt, Josephine Magness, Nicholas Banfield, Robert Sherratt, Simone Pascale Wheller
HANSFORD, Teresa Susan	Reform UK	(address in Weald of Kent Constituency)	Amie Elizabeth Leach (P), Beverley J Saxby (S), Gary Roden, James William Blewett, Janice AM Standen, Kay Sinclair, Michaela Blewett, Ronald P Taylor, Susan A Collings, Trudi L Collins
SHAW, Tim	Independence Alliance (Kent)	Longwood, 67 Sevenoaks Rd, Borough Green, Kent, TN15 8AR	Francois M Taylor (P), Peter Gillin (S), Bernard Galopin, Christine EJ Shaw, David A Spreadbury, Jacqueline A Taylor, Lesley D Gillin, Scott M Millener, Susan Patricia Butterfill, Wendy E Palmer
TUGENDHAT, Tom	The Conservative Party Candidate	(address in Tonbridge Constituency)	Dennis W King (P), Sarah A Hudson (S), James R Lark, Mark Russell Rhodes, Matthew David Boughton, Michael D Payne, Michael Hudson, Michele Suzanne Kavanagh, Robin Betts, Thomas George Hudson
WOOLLCOMBE, John	Liberal Democrat	29 Clyde Vale, London, SE23 3JG	Francois A Hoskins (P), Garry C Bridge (S), Christopher J Scott, Eve V Otley, Helen Hobhouse, James Anthony Clokey, JD Morgan, John M Otley, Jonathan Aldridge, Katherine Grant

<sup>1</sup>If a candidate has requested not to make their home address public, the relevant electoral area in which their home address is situated (or the country if their address is outside the UK) will be provided.