



OFFHAM PARISH COUNCIL

Parish Council Newsletter – February 2025

February 2025 Meeting

- County Councillor Hohler was unable to attend the meeting but provided an update on the Devolution process.
- Since the meeting, the Government has announced that Kent has not been accepted onto the Devolution Priority Programme. A statement by KCC about this can be viewed at: <https://news.kent.gov.uk/articles/a-totally-incomprehensible-decision-kcc-leader-reacts-to-governments-decision-not-to-include-kent-on-its-devolution-priority-programme>
- Borough Councillor Tatton was also unable to attend the meeting, but commented about the refusal of planning permission for White Ladies. She said it is clear from the Case Officer's Delegated Report that insufficient information had been provided in relation to a number of matters but, importantly, it was found that the development would constitute inappropriate development in the Green Belt
- Cllr Taylor had a positive and constructive meeting with the Head Teacher of Offham Primary School
- The Final Community Resilience Plan should be available for circulation to residents shortly.

Are you interested in becoming a Parish Councillor? We have two vacancies. Please contact sue.taylor@offham-pc.gov.uk or clerk@offham-pc.gov.uk for more information.

Highways

Residents can report any issues to Highways using the online fault reporting tool – <https://www.kent.gov.uk/roads-and-travel/report-a-problem> e.g. – signs missing, white lines faded, potholes, signs covered by vegetation, tools or equipment left after roadworks, requests for traffic calming etc. Details of any current or planned roadworks can be viewed at <https://one.network/>

Offham May Day 2025 – Saturday 3rd May 2025

Offham May Day
Saturday 3rd May 2025

We are looking for the Offham May Queen for 2025
along with 2-4 Attendants and 2 Flower Girls

Age ranges - May Queen (13-16), Attendants (9-12) & Flower Girls (4-8)
Children must live in the village

If you are interested please email: offhammayday@gmail.com



The Quintain

The Offham Quintain is a Grade II listed structure. It is very much a symbol of Offham, and a great source of pride for the Village. It is believed to be the last remaining standing Quintain in the country.

The Quintain is in need of some maintenance and repair. Councillors are anxious that any work is completed to a high quality, complies with the necessary rules and requirements and is sensitive to the importance of the structure. James Miller, a Conservation Accredited Engineer, has provided a report and is advising the Parish Council. He has made a Listed Building Application, on behalf of the Parish Council, for approval from TMBC to carry out these works. The information and planning application is available on the TMBC planning portal reference 25/00201.

Carrying out the repairs and maintenance will require specialist contractors. The project will be the main focus of the Parish Councils fund raising efforts this year.

Suzanne Y is working through Parish Council archives to produce a document about the history of The Quintain.

Speedwatch

If you would like to take part, please contact fred.steer@offham-pc.gov.uk . Councillors have seen Speedwatch have a positive benefit in reducing the speed of vehicles through the village.

Updated Village Contact List

An updated list of useful contacts is at the end of the Newsletter.



Parish Council and Village Events

- Parish Council Race Night, with Malling Lions – 29th March 2025
- Offham May Day – 3rd May 2025
- Annual Parish Meeting – Offham Village Hall 9th May 2025
- Shedettes – the Kings Arms, every Tuesday 10am – 11.30am
- Men's Shed – The Kings Arms, every Thursday 10am-11.30am
- Offham Food Bank – every other Monday from Kings Arms (offhamvillagehall@outlook.com)

Contact the Parish Council E: clerk@offham-pc.gov.uk T: 07563 606573. The Parish Council Clerk works 12 hours a week, Monday to Thursday, and aims to respond to emails and phone calls within 5 working days. For more information, please go to our website www.offham-pc.gov.uk or [@Offham Parish Council](https://www.facebook.com/OffhamParishCouncil) on Facebook for further updates.

Offham Parish Council Meetings: The next meeting will be held on **Tuesday 4th March 2005**



**PUBLIC
NOTICE**

KENT COUNTY COUNCIL

TESTON ROAD, OFFHAM

TEMPORARY PROHIBITION OF DRIVING

Road Traffic Regulation Act 1984 – Section 14 (2)

Kent County Council gives notice that Teston Road, Offham will be closed to through traffic, on 10th February 2025 for up to 3 days.

The road will be closed in its entirety.

The alternative route is via Teston Road, Seven Mile Lane, A20 London Road, Town Hill, High Street, St Leonards Street, and vice versa.

This closure is necessary to enable water pipe repairs to be carried out by South East Water.

This Notice applies when the relevant signs and barriers are on site and is valid for a period of no more than 5 days.

Signed for and on behalf of the Kent County Council,
Haroona Chughtai, Director of Highways & Transportation, or by her authorised signatory.

Authorised Signatory

Dated this 10th day of February 2025
Kent County Council, County Hall, Maidstone, ME14 1XQ

Highway improvements in your area

Kent Street, Mereworth Junction Improvement



What we plan to do – Active Travel Scheme

Kent County Council (KCC) are planning to upgrade Kent Street and A228 Malling Road junction in Maidstone to signal controlled.

The scheme will include: -

- Install traffic signals at the junctions on Kent Street and Malling Road to improve turning in and out of the road.
- Widen the carriageway along Malling Road from the junction at Kent Street to Beech Road. This is to aid HGVs travelling along the road and vehicles turning in to Kent Street.
- Provide a push button pedestrian crossing facility on Malling Road near the junction of Kent Street.
- Provide a new crossing point with tactile paving at Beech Road
- Relocate existing utility services and a new hedgerow to suit the new road layout
- Provide a 2.5 metre wide footway on the western side of the Malling Road towards Kings Hill and
- Install two new bus stops to the north of Kent Street – one on either side of Malling Road.

When we plan to carry out the work and how long it will take

The work will be phased and take around **40 weeks** to complete, commencing on **17th February 2025**, between the hours of **09:30** and **15:30** using temporary lights. Nighttime closure works will be required to complete resurfacing works and buried services connection between the hours of **20:00** and **05:00**. Beech Road and Kent Street (w) arms will be closed during the main works starting March 31st to scheme completion in November 2025.

A breakdown of the works is available in the table 1 below. An updated version of the works programme will be made available online <https://www.kent.gov.uk/roads-and-travel/road-projects> during construction to capture changes to phases or dates.

Table 1: Works Programme

Phases	Section	Traffic Management		Works Dates
		Temporary Lights	Nighttime Closure	
1	Enabling works - Hedgerow part-removal and trial holes	Mobile working only 9.30am to 3.30pm	n/a	17 th – 23 rd February 2025
2	A228 Malling Road between Kent Street (e) and Property No. 212	3-way temp lights 2 no. ped lights	n/a	March 31 st to 22 nd June 2025
3A	A228 Malling Road between Kent Street (w) and Beech Road	n/a	n/a	June 22 nd to 22 nd September 2025
3B	A228 Malling Road between Kent Street (w) and Beech Road	3-way temp lights 2 no. ped lights	n/a	22 nd September to 30 th November 2025
4	Road Crossings – ducting for signals or utility services and High Friction Surfacing		Kent Street (w), Beech Road and A228 Malling Road – closed	TBC (phase 2 or 3B)
5	Traffic Signals / Utility Diversion installations	3-way temp lights	n/a	22 nd September to October 2025
6	Road Markings	4-way temp lights	n/a	22 nd September to October 2025

This type of work can be affected by bad weather, so if it is not possible for us to carry it out at this time, we will arrange a new date and let you know via a letter drop to your home. We will also install signs along the road, before we start, showing the date we plan to start work.

Highway improvements in your area

Kent Street, Mereworth Junction Improvement



How will we carry out the works and how it will affect you

The works will be undertaken using **temporary traffic signals** and a **road closure** to give our contractor a safe area within which to carry out construction. A diversion route will be signed for any closure planned as part of the works.

Why are we doing this work?

The existing junction has very poor visibility for vehicles wishing to turn out onto the A228 Malling Road. The existing carriageway width makes it very tight when large vehicles pass each other, any incidents on this route can cause a high-level of disruption to the surrounding road network.

The scheme aims to improve the junction allowing vehicles to turn in to and out of Kent Street more easily. The scheme will also provide improved footway and cycling facilities along Malling Road as well as signalised pedestrian crossings.

Further information on this scheme and other Kent County Council's Active Travel schemes can be found on the links below: -

[Road projects - Kent County Council](#)

How you can help us

We need your help to make sure the work is done as quickly as possible and to the best possible quality. We want to complete the works as quickly as we can and without causing you too much inconvenience. If your vehicle is usually parked on the carriageway, please make sure you park it somewhere else away from the site whilst the works are carried out.

For your safety and the safety of our workforce, please drive carefully and slowly through the roadworks.

Feedback from our workers shows that too many drivers go too fast through roadworks. Everyone is entitled to a safe workplace and our staff work next to moving traffic and risk injury every day to maintain and improve the highway for everyone.

How to contact us?

For further information or to find out more about what we do please visit our website www.kent.gov.uk/highways where you can also report a fault on any of our roads across Kent. You can find us on Twitter [@KentHighways](#). You can also view our diversion/permit details at www.one.network. Alternatively, you can call us on **03000 41 81 81**.

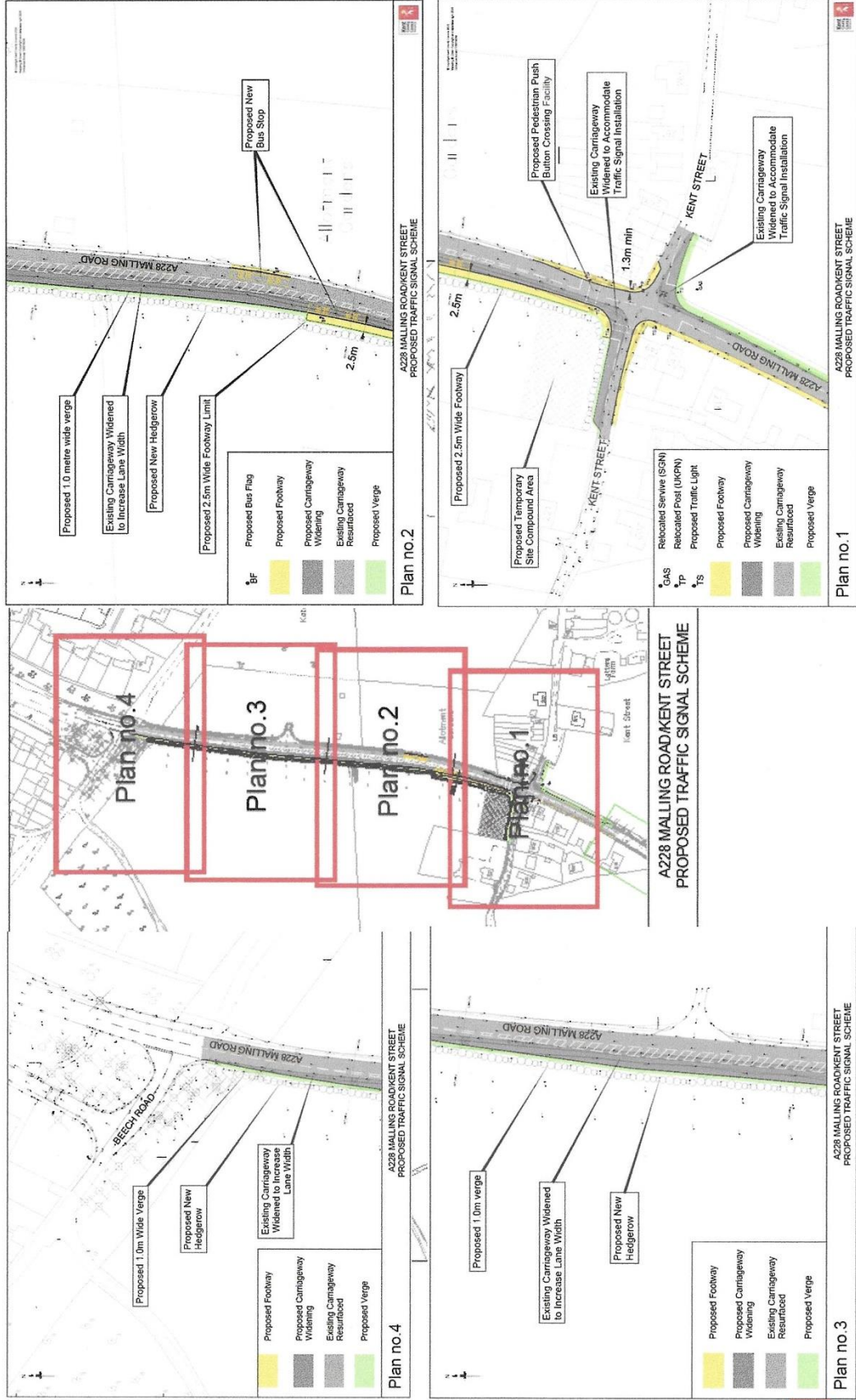
We often ask residents to fill in a short feedback survey online at www.kent.gov.uk/roadworkssurvey.

WARNING – Beware Bogus Callers

Kent County Council Highways, Transportation and Waste do not allow works to be carried out on private properties. If anyone says they are working for us or our specialist contractors and offer to carry out any work for cash, they should be treated with caution. We advise you to contact Citizen's Advice on 03444 111 444 (Monday to Friday 9.00am to 5.00pm)

Highway improvements in your area

Kent Street, Mereworth Junction Improvement



UK Power Networks - Temporary Road Closure - Pepingstraw Close, Offham - 24th February 2025 (Tonbridge and Malling District)

Due to works planned to be undertaken by **UK Power Networks**, it will be necessary to close part of Pepingstraw Close, Offham, from 24th February 2025 with estimated completion by 28th February 2025.

Pepingstraw Close, Offham, will be closed outside Orchard House. To the extent indicated by signs and barriers on site.

There is no alternative route for any through traffic and access will be maintained when it is safe to do so.

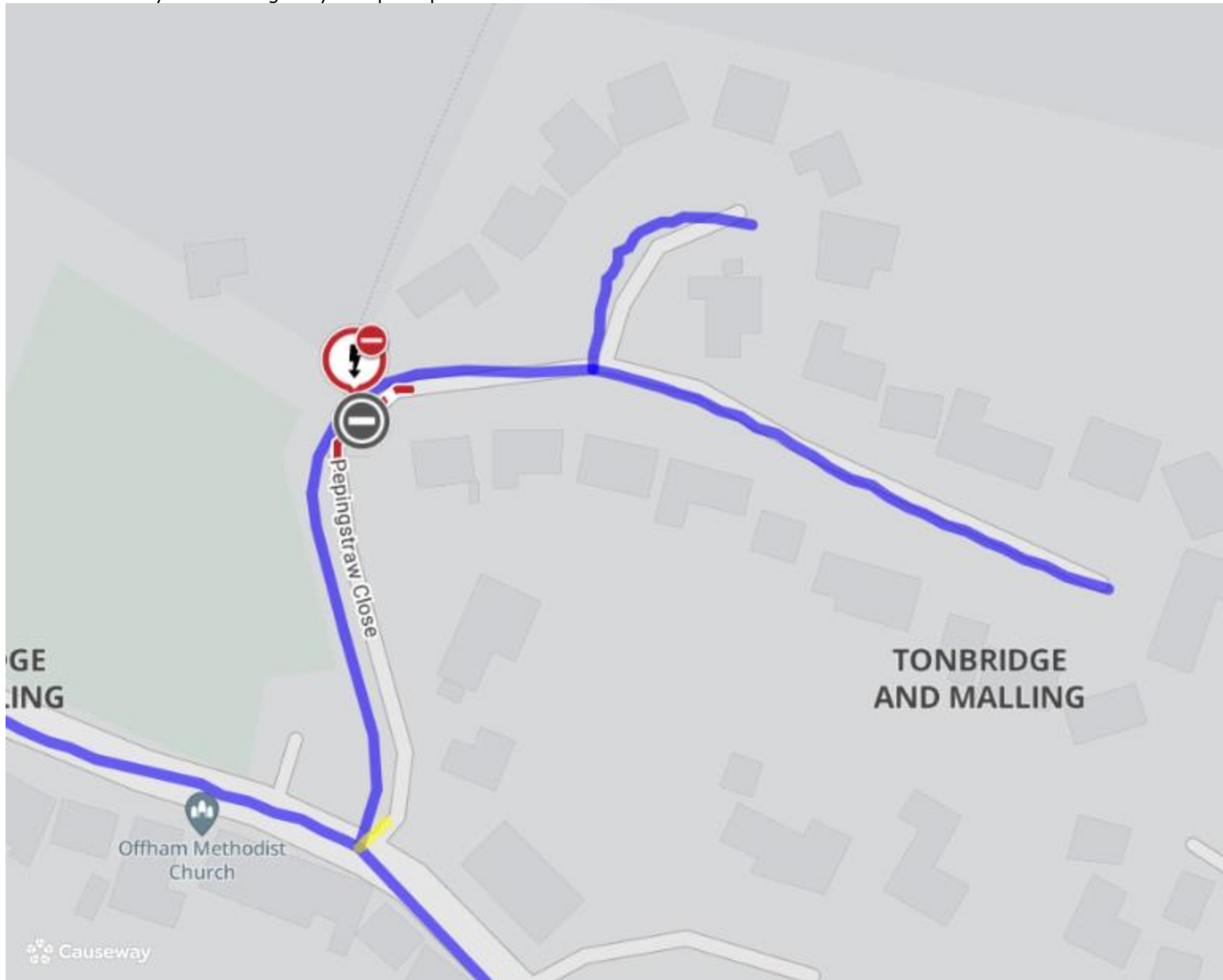
Pedestrian access will be maintained during the works.

The closure is required for the safety of the public and workforce to allow new connection works to be carried out, works are undertaken by UK Power Networks.

For the most up to date information on these works please visit: <https://one.network/?tm=141259606>

For information regarding this closure please contact UK Power Networks on 08000 294 285, who will be able to assist with the scope of these works.

The Kent County Council Highways Helpline phone number is: 03000 418181



Imagery © 2025 [MapTiler](#) | Imagery © 2025 [Hexagon](#) | © [MapTiler](#) © [OpenStreetMap contributors](#)

This bulletin contains public information and can be forwarded to any other road users who may be affected. Every care is taken to ensure the accuracy of the information, but no liability can be accepted for any changes or errors. Road names are taken from the National Street Gazetteer, which can be viewed on [one.network](#), with alternative names given where known.

For details of roadworks, please see [One.Network](#)

Regards,
Streetworks West Central Team
03000 418181 (9am - 5pm Monday-Friday)
03000 419191 (all other times)

Kent County Council - Temporary Road Closure - King Hill, Kings Hill - 6th March 2025 (Tonbridge and Malling District)

Due to works planned to be undertaken by **Kent County Council**, it will be necessary to close part of King Hill, Kings Hill, from 6th March 2025 with estimated completion by 6th March 2025.

King Hill, Kings Hill, will be closed between the junctions of A228 Roundabout and Orwell Spike, between the hours of 20:00 and 05:00 only. To the extent indicated by signs and barriers on site.

The alternative route for any through traffic is via A228 Ashton Way, A20 London Road, Town Hill, High Street, St Leonards Street, King Hill and vice versa.

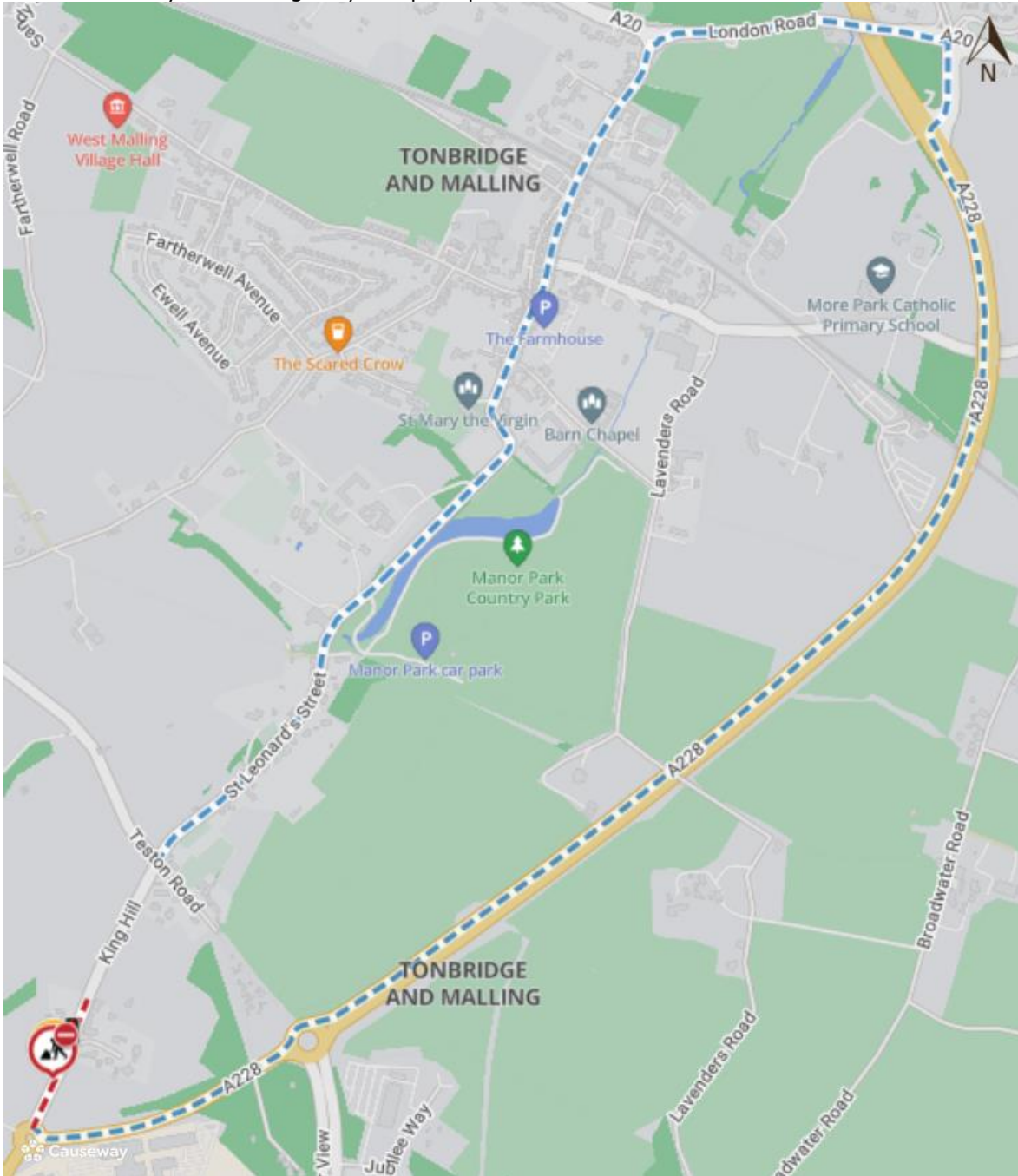
Pedestrian access will be maintained during the works.

The closure is required for the safety of the public and workforce to allow highway development works to be carried out, works undertaken by Kent County Council.

For the most up to date information on these works please visit: <https://one.network/?tm=142098326>

For information regarding this closure please contact Kent County Council, who will be able to assist with the scope of these works.

The Kent County Council Highways Helpline phone number is: 03000 418181



Imagery © 2025 [MapTiler](#) | Imagery © 2025 [Hexagon](#) | © [MapTiler](#) © [OpenStreetMap contributors](#)

This bulletin contains public information and can be forwarded to any other road users who may be affected. Every care is taken to ensure the accuracy of the information, but no liability can be accepted for any changes or errors.

Road names are taken from the National Street Gazetteer, which can be viewed on [one.network](#), with alternative names given where known.

For details of roadworks, please see [One.Network](#)



Offham Parish Council

Race Night

Supported by Malling Lions Club

Saturday 29th March

First Race 7.30pm

At Offham Village Hall

£10

Pizzaiolo Pizza Van on Site
for delicious pizzas or bring your own
food, drink & glasses

For tickets & pre-ordering pizzas
please call Sue Williams

07732 267121

Raffle & Auction

All profits will go towards village projects





**Friday May 9th 2025
Commences 7.30pm**

All residents are invited

To

OFFHAM ANNUAL PARISH MEETING
At
OFFHAM VILLAGE HALL

This is an annual meeting run by the Parish Council

Come and find out more about what's happening in our Village
Meet Offham Parish Councillors and representatives from various organisations and local companies

"Offham Village Meet & Greet Event"

There will be a formal introduction and awards presentation, followed by an informal evening of Village groups, clubs and local organisations who will be available to give our community information about themselves and their activities

Please note this is a Village Meeting and not the Parish Council AGM



Clerk to Offham Parish Council Tel: 07563 606573
Email clerk@offham-pc.gov.uk Website: www.offham-pc.gov.uk

OFFHAM



YOUR VILLAGE NEEDS YOU!

Parish Councillor Vacancies

Come and Join the Parish Council

Would you like to:

- Make a difference to local people?
- Give something back to your community?
- Help shape change for the benefit of your local area?



For More Details:

clerk@offham-pc.gov.uk

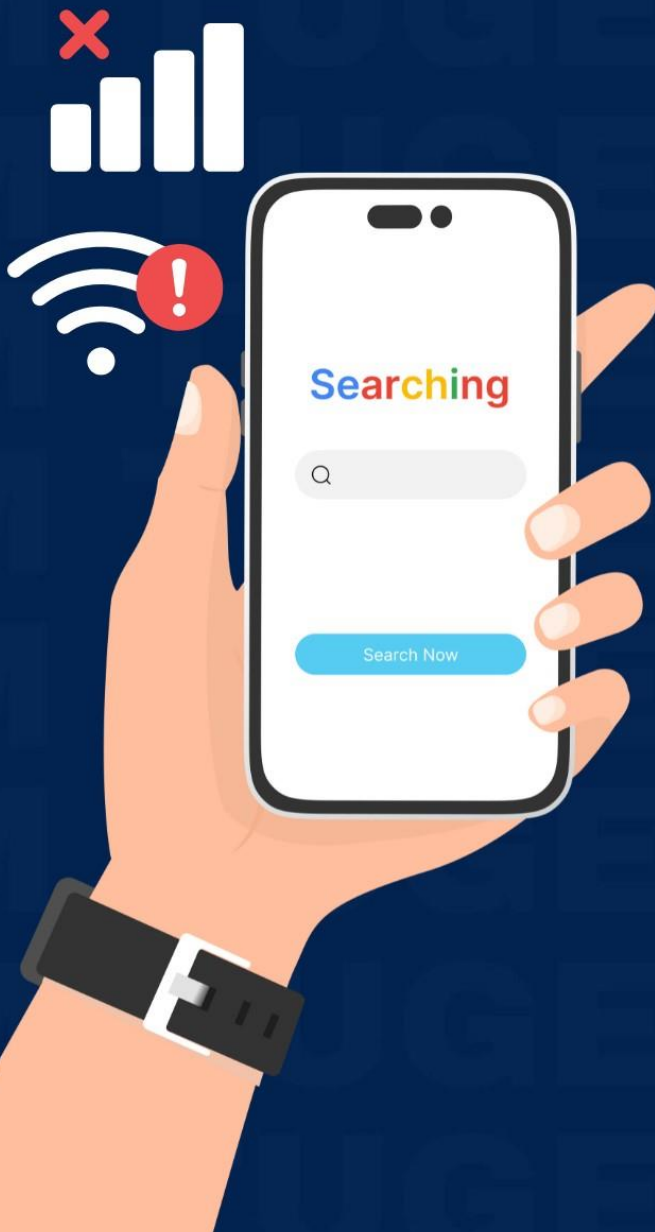
sue.taylor@offham-pc.gov

07563 606573



Are you frustrated by poor mobile phone signal?

I AM TOO



Tell me where we need improvements in our community

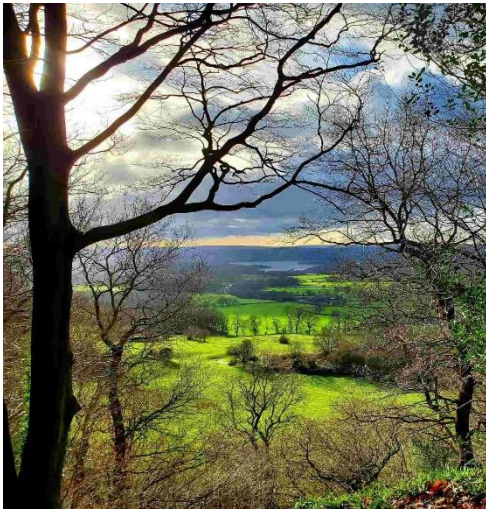


Tom Tugendhat MP

Member of Parliament



Stride out in good company - March 2025



Our friendly group is one of 13 Ramblers groups in Kent and part of the national Ramblers walking charity. We explore the beautiful countryside of Tonbridge and Malling and surrounding areas.

You don't have to be a Ramblers member to try up to three free 'taster' walks with us.

If you're new to our walks, please contact the walk leader to check that their walk will suit you.

Towards Bough Beech Reservoir – 16 March walk

For full details of all upcoming walks, see **Tonbridge and Malling Ramblers** [Facebook page](#) or www.tonbridgeandmallinghamblers.org.uk.

Sunday 2 March	Leisurely, mainly flat circular walk on tracks around the fishing lake in Haysden Country Park, then over grassy paths to Haysden Water and on good tracks along the Eden Valley path. There is a short road stretch and the return is through fields (can be muddy).	4.8 miles
Thursday 6 March	Horsmonden Iron Industry leisurely circular walk taking in part of the High Weald Landscape Trail. Includes woodland, meadows, orchards, lakes, parkland, the National Trust grounds of Sprivers, and some quiet lanes.	5.5 miles
Sunday 9 March	Walk through British history in North America starting from Dryhill Nature Park and passing through the estate of Montreal Park. Fields, views and not too much mud! Moderate difficulty.	5.5 miles
Thursday 13 March	A leisurely walk following the River Medway from Tudeley. Mostly flat and without stiles. The first half of the walk is across open fields and then along the Medway tow path. The return from Tonbridge is along quiet lanes and through orchards.	5.7 miles

Sunday 16 March	Gentle walk from Chiddingstone Causeway to Bough Beech with a break near the reservoir for some bird watching. Moderate difficulty.	6 miles
Thursday 27 March	Circular walk from Birling across fields and footpaths with a gentle ascent to the Pilgrims Way. Return across open fields. Good views; moderate difficulty; couple of stiles.	5.5 miles
Walks usually start mid-morning. There's a short half-way break (bring refreshments) and we usually finish near a pub. Most walks are dog-friendly (see website).		



USEFUL CONTACTS



KENT HIGHWAYS

Report a problem on a road or pavement. You can report non-urgent issues online including: street light faults, potholes, drainage, traffic signal faults, overgrown vegetation (including hedges and grass).

www.kent.gov.uk/roads-and-travel/report-a-problem

To report any emergency issues outside of normal office hours (Monday - Friday, 9am till 5pm), please telephone 03000 41 91 91.



PUBLIC RIGHTS OF WAY

You can report non-urgent issues online including: broken stiles, overgrown vegetation or fallen trees, damaged or dangerous path surfaces, damaged or missing signposts.

<https://www.kent.gov.uk/waste-planning-and-land/public-rights-of-way/report-a-problem-on-a-right-of-way>



TONBRIDGE AND MALLING BOROUGH COUNCIL

You can report issues about: refuse collections, full litter bins or dog waste bins, fly tipping and litter and street cleaning to TMBC

waste.services@tmbc.gov.uk

Customer.services@tmbc.gov.uk

Telephone 01732 844522



OFFHAM NEIGHBOURHOOD WATCH

Contact Simon Mahoney – simonmahoneyuk@outlook.com



COUNTRY EYE

Country Eye App – “helping to keep the Kent countryside safe”. You can, amongst other things, report fly tipping www.countryeye.co.uk



MY COMMUNITY VOICE

This is a new method of communicating with the local police and for them to contact all or specific communities - [HTTPS://WWW.MYCOMMUNITYVOICEKENT.CO.UK/](https://www.mycommunityvoicekent.co.uk/)



Kent
POLICE

POLICE

Emergency 999. Call 999 if:

- a serious offence is in progress or has just been committed
- someone is in immediate danger or harm
- property is in danger of being damaged
- a serious disruption to the public is likely

You can also text 'Police' to 60066 if you're deaf or hard of hearing.

Silent 999 calls - If you're in danger but you can't talk on the phone, you should still call 999, then [follow the instructions](https://www.kent.police.uk/contact/af/contact-us/us/contact-us/how-to-make-a-silent-999-call/): (https://www.kent.police.uk/contact/af/contact-us/us/contact-us/how-to-make-a-silent-999-call/) depending on whether you're calling from a mobile or a landline.

Non-emergency 101. Call 101 for non-emergency enquiries.

You can also text 'Police' to 60066 if you're deaf or hard of hearing.

Anti-terrorist hotline 0800 789 321. Call the UK Anti-Terrorism Hotline if you've seen or heard something that you think could suggest terrorist activity.

Report online at www.kent.police.uk



NATIONAL HIGHWAYS

Motorways and Major A Road problems - To Report a problem on the network -

<https://report.nationalhighways.co.uk/>

General Enquiries - info@nationalhighways.co.uk

Telephone: 0300 123 5000



OFFHAM LANDFILL SITE

FCC	24 Hour Emergency Number	01302 553461		
FCC	Michael Ross	07514932598	Site Manager	michael.ross@fccenvironment.co.uk
Infinis	Logistics Centre	01604 662420 Option 1		Gas compound and Gas Infrastructure



OFFHAM SOLAR PARK

Contact: communityengagement@infinis.com



BLAISE FARM QUARRY

- Danny Brooks, Quarry Manager at Gallagher - danny.brooks@gallagher-group.co.uk

BLAISE FARM IVC

- sheq@envar.co.uk
- james.cooper@envar.co.uk
- Katrina.waters@envar.co.uk
- Neil.winchester@envar.co.uk



BLAISE FARM AD PLANT

- Darren Smith, Environmental & Compliance Manager - d.smith@b-ne.uk

BLAISE FARM

You should contact the **operator** about any concerns first since they are best able to respond to queries and address any issues that may arise. If this does not secure a satisfactory outcome you should then contact **KCC** for issues relating to the permitted minerals (quarrying) and waste management development and the **Environment Agency** who have issued the Environmental Permits and are the Primary Regulator.

- Kent County Council (Minerals and Waste Planning): planning.applications@kent.gov.uk
- In order for the Environment Agency to act upon and hold a formal record of complaints please report all complaints to their incident reporting line which is **0800 80 70 60**.
- Environment Agency - enquiries@environment-agency.gov.uk

If you are making complaints to KCC and the Environment Agency it would be useful to also copy in:

- Kent County Council Councillor Sarah Hohler - sarah.hohler@kent.gov.uk
- Tonbridge & Malling Borough Council - environmental.protection@tmbc.gov.uk
- Trudy Dean, Tonbridge & Malling Borough Councillor – trudy.dean@tmbc.gov.uk
- Roger Roud, Tonbridge & Malling Borough Councillor – roger.roud@tmbc.gov.uk
- Michelle Tatton, Tonbridge & Malling Borough Councillor – michelle.tatton@tmbc.gov.uk
- Offham Parish Council – clerk@offham-pc.gov.uk

Please do not copy all emails to KCC, TMBC and the EA, but contact the sites in the first instance. For the waste sites it may not be clear which plant is responsible for the issues you are concerned about, so it is suggested that you report to both the IVC Site and the AD Site who will be able to identify which is responsible.